



Tech Works™

"Making Specialized Communication Easy"

PROFESSIONAL AUDIO ACCESSORIES



CS55 WIRELESS HEADSET - When the user requires mobility, privacy, and quality the CS55 does it all in a light weight rechargeable package with an integral over the ear mounting band. The CS55 comes complete with the **HS-1** adapter.



PRO 42 BOUNDARY MICROPHONE - It is best to get the microphone as close to the talker as possible. The PRO 42 is a high quality condenser microphone that if placed on the boom arm near the visual monitor, it gives incomparable pick up.



PRO 45 HANGING MICROPHONE - In the procedure room area such as an operating table the PRO 45 is a high quality condenser microphone with cardioid pattern for excellent signal to noise and 25' cable included for easy connection.



PRO 47T-PLUS - MICROPHONE with a DESK STAND BASE and Two Switches. This is the perfect solution for the Cath Lab operator location. It is an attractive professional assembly complete with a Blue "Talk" and an Amber "Listen" switch to allow complete control of communication flow.



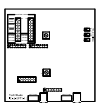
HM-1 - Hidden Microphone - The HM-1 is an Omni-Directional Condenser Microphone with an electronically balanced preamp designed for interview pick up. This is a complete assembly including a 1-gang face plate and mounting hardware.



System 21 CEILING MOUNT SPEAKER System- This is a complete assembly including a back box and mounting hardware. The System 21 comes complete with a 25 Volt transformer and is designed to make installation easy in hard ceilings.



System 5 CEILING MOUNT SPEAKER System- This is a complete assembly including a back box and mounting hardware. The System 5 comes complete with a 25 Volt transformer or is available as the System 5-8 in 8 Ohm for Music playback.



IC-52-OPT1 - This is the ENH module that comes in the IC-52-ENH. It gives the IC-52 the Music Muting control for Cath Labs and the Recording Outputs for Interview and Interrogation Applications. It can be added at any time to the IC-52-STD.

22347 La Palma Ave., Suite #107, Yorba Linda, CA 92887
Direct Line: 1-714-694-1040 FAX: 1-714-694-1041 Toll Free: 1-800-813-1080
Web site www.tech4people.com

1/12



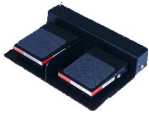
Tech Works™

"Making Specialized Communication Easy"

PROFESSIONAL AUDIO ACCESSORIES



FS-1-PLUS - CALL / CONTROL SWITCH - is a rugged floor mount foot switch that includes a 15 foot cable with connectors and wall plate. The FS-1-PLUS is used for hands free options such as Technician Call Tone Activation or Push To Talk.



FS-2-PLUS - CALL / CONTROL SWITCH - is a 2 position foot switch that includes a 15 foot cable with connectors and wall plate. The FS-2-PLUS is used for hands free options for two functions such as Technician Call Tone Activation or Push To Talk.



5221-C CALL SWITCH - This is an attractive Water Resistant Call Switch assembly for use in areas where ceiling speakers are used to communicate but staff needs a button to get someone's attention. Made of ABS plastic with a durable Kevlar face.



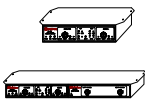
SA-202 STEREO AMPLIFIER - A two channel audio power amplifier designed to add Music to the IC-52-ENH. It delivers 20 Watts per channel into 8 ohms at very low noise and distortion. Perfect for Procedure Rooms and small spaces.



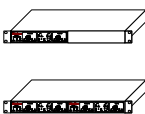
PA-401 PAGING AMPLIFIER - An audio amplifier designed to add Power to the ICA-52-ENH. It delivers 40 Watts to 25 Volt loads at very low noise and distortion. Perfect for Prisons or Security applications when working in large areas.



2021 VANDAL RESISTANT SPEAKER STATION - Durable weather and vandal resistant assembly includes an integral push button, a 25 Volt speaker, a Call Assurance Light, and mounts to a standard 2 gang electrical box.



WM-1 WALL OR UNDER COUNTER MOUNT - The IC-52 is available with a top that provides 1" metal tabs on each side of the unit for easy attachment to either a wall or the under side of a counter. Also available in a side by side WM-2 .



RM-1 RACK MOUNT - IC-52 units can be rack mounted as either a single unit, dual units (side by side), or as companions with accessories like the SA-202 Stereo Amplifier. The rack mount is 1 rack unit (1-7/8") High by EIA 19" Wide.

22347 La Palma Ave., Suite #107, Yorba Linda, CA 92887
Direct Line: **1-714-694-1040** FAX: **1-714-694-1041** Toll Free: **1-800-813-1080**
Web site **www.tech4people.com**